



BUREAU VERITAS ENERGY DIAGNOSIS

Supporting Your Journey
Towards Sustainability



WHY ENERGY DIAGNOSIS?

To answer the call from the brands/retailers, and the local government, facilities are struggling to find a solution to help them improve their energy efficiency and reduce their carbon footprint. Bureau Veritas' Energy Diagnosis is a project catering to the needs of those facilities.

INTRODUCING THE BUREAU VERITAS (BV) ENERGY DIAGNOSIS SCHEME

By working together with facilities in different industries, we have standardized an approach to make the process scalable, but still maintaining the possibility for customization in accordance with the different needs from facilities.

By a combination of on-site and off-site 'diagnosis', BV specialists identify the root causes leading to high energy consumption and carbon emissions. With a full year facility management and representative engagement, BV specialists work in collaboration with the facility, map out a practical 3-year plan with targets set and agreed with regards to energy improvement and GHG performance.

PROGRAM PURPOSE

The BV Energy Diagnosis Solution helps facilities to reduce energy consumption and improve efficiency of production processes and equipment, thereby

1. Avoiding energy loss;
2. Reducing costs, and;
3. Improving sustainability performance continuously over time.

KEY BENEFITS



Assist with better energy efficiency decisions based on real-time data and insights



Strengthen brand image



Respond to customers by articulating process and information about energy management practices

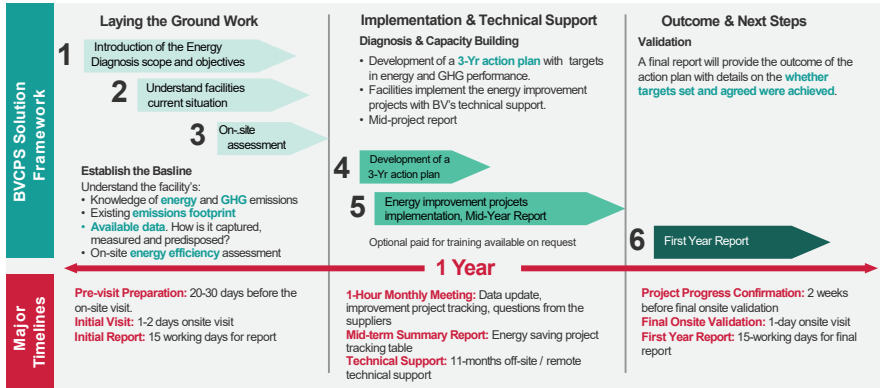


Improve environmental impact for a more sustainable world



PROGRAM PROCESS

SOLUTION FRAMEWORK & MAJOR TIMELINES



PRPROGRAM COST:

Price: Tier 1 factory: USD5,500 + travel cost + Tax/year
 Tier 2 factory: USD7,500 + travel cost + Tax/year

COUNTRY COVERAGE:

Available now in China & Vietnam. Additional countries will be onboarded.

TIMELINE:

The program is ready to be deployed with a duration of 12 months.

BUREAU VERITAS CAPACITY:

During our launch phase we can support a volume of 3-5 audits / month per country.

ON-BOARDING REQUIREMENTS:

From a resource perspective, facilities need to have at least 1 person in charge of the program. The facility should additionally have monthly records for all energy and water consumption.

The program currently focuses on energy efficiency. Renewable energy is under development as part of our phase 2 program development.

The service is most useful for facilities that are currently on the entry level.

For those already within the HIGG FEM scheme, there are two kinds of suppliers who will benefit from our program:

- Suppliers who do not currently fulfill all the requirements under Level 1 and Level 2 in the energy and GHG section
- Suppliers with no clear reduction in their year on year energy consumption

CONTACT US

🌐 www.cps.bureauveritas.com

✉️ cps.global@bureauveritas.com

WHY CHOOSE BUREAU VERITAS?



NETWORK

Committed to World Class Service Delivery, Driving Optimal Performance & Reliability



KNOWLEDGE

Placing Our Best in Class People at the Heart of Your Vision



LEADERSHIP

A Global Leader in Supply Chain Sustainability Solutions



MARK OF GLOBAL RECOGNITION

Improve Reputation, Gain Access to Existing & New Markets